

# SOUTHEASTERN WISCONSIN REGIONAL PLANNING COMMISSION

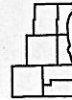
W239 N1812 ROCKWOOD DRIVE • PO BOX 1607 • WAUKESHA, WI 53187-1607 •

TELEPHONE (262) 547-6721  
FAX (262) 547-1103

December 23, 2008

Serving the Counties of:

KENOSHA  
MILWAUKEE  
OZAUKEE  
RACINE  
WALWORTH  
WASHINGTON  
WAUKESHA



Mr. Daniel S. Duchniak, P.E.  
General Manager  
Waukesha Water Utility  
115 Delafield Street  
Waukesha, WI 53188

Dear Mr. Duchniak:

Pursuant to your August 13, 2008, letter request, the Southeastern Wisconsin Regional Planning Commission is hereby transmitting a copy of a document setting forth a delineation of a 20-year water supply service area attendant to the Waukesha Water Utility. This is intended to meet the requirements of the recently adopted Great Lakes Compact (2007 Wisconsin Act 227) related to the delineation of the water supply service area to be used for developing a water supply plan to support the application for obtaining a Lake Michigan water supply source. Your August 13th letter indicates that such action is being contemplated by the Utility.

The water supply service area set forth in the attached document is considered to be consistent with the planned Waukesha sewer service area as incorporated in the regional water quality management plan for southeastern Wisconsin and with the preliminary recommended regional water supply plan for southeastern Wisconsin currently being considered during a public informational period. It is assumed that public input and comment on the water supply service area will be carried out as part of the process for obtaining such comment on the City's water supply plan and related information needed to support your application.

We trust this responds to your request. Should you have any questions concerning this matter, please do not hesitate to contact us.

Sincerely,

Philip C. Evenson, AICP  
Executive Director

PCE/RPB/pk  
#141636 V1 - WAUK WATER SUPPLY DRAFT TRANSMIT LTR

Enclosure (#141582)

cc: Mr. Eric Ebersberger, WDNR-Madison (w/enclosure)  
Ms. Gloria L. McCutcheon, WDNR-Milwaukee (w/enclosure)  
Mr. James D'Antuono, WDNR-Waukesha (w/enclosure)  
Mr. Larry Nelson, City of Waukesha (w/enclosure)  
Mr. Jeffrey L. Weigel, City of Pewaukee (w/enclosure)  
Mr. Thomas M. Grisa, City of Brookfield (w/enclosure)  
Mr. Richard M. Czopp, Town of Brookfield (w/enclosure)  
Ms. Sharon L. Leair, Town of Genesee (w/enclosure)  
Mr. Paul L. Kanter, Town of Delafield (w/enclosure)  
Mr. Robert J. Tallinger, Sr., Town of Waukesha (w/enclosure)

# **WATER SUPPLY SERVICE AREA FOR THE CITY OF WAUKESHA AND ENVIRONS**

## **WAUKESHA COUNTY WISCONSIN**

**WATER SUPPLY SERVICE AREA FOR  
THE CITY OF WAUKESHA AND ENVIRONS  
  
WAUKESHA COUNTY, WISCONSIN**

Prepared by the

Southeastern Wisconsin Regional Planning Commission  
W239 N1812 Rockwood Drive  
P.O. Box 1607  
Waukesha, Wisconsin 53187-1607  
[www.sewrpc.org](http://www.sewrpc.org)

December 2008

## **SEWRPC Staff Memorandum**

### **RESPONSE TO REQUESTS BY THE CITY OF WAUKESHA WATER UTILITY TO DELINEATE THE 20-YEAR PLANNED WATER SUPPLY SERVICE AREA FOR THE UTILITY**

#### **INTRODUCTION AND BACKGROUND**

By letter of August 13, 2008, the Waukesha Water Utility requested that the Southeastern Wisconsin Regional Planning Commission provide a delineation of the water supply service area potentially attendant to the Utility. A copy of that letter request is attached hereto as Exhibit A. The request was made to support an application being considered by the Utility to obtain a Lake Michigan water supply source. This memorandum, including the attached Map 1, is intended to respond to that request.

Under the recently adopted Great Lakes Compact (2007 Wisconsin Act 227), any utility seeking a new or increased withdrawal of water from the Great Lakes basin and diverting the water to any place outside the Great Lakes basin must register with the State and provide information to the State regarding the proposed withdrawal. That information includes a water supply plan which is to be based upon a proposed water supply service area. The Act specifies that, for the purposes of the water supply plans, an areawide water quality planning agency designated by the Governor under the Wisconsin Department of Natural Resources' areawide water quality management planning rule set forth in Chapter NR 121 of the *Wisconsin Administrative Code*, shall delineate the proposed water service supply areas for all of the public water supply systems in the planning area for which the agency is designated. The Southeastern Wisconsin Regional Planning Commission is such an agency. The Act also requires that the water supply service areas be consistent with the applicable approved areawide water quality management plan for the planning area. The regional agency may also provide regional needs assessments and other regional water supply planning information to persons preparing public water supply system plans.

The Southeastern Wisconsin Regional Planning Commission is currently preparing a regional water supply plan for the Southeastern Wisconsin Region.<sup>1</sup> That plan includes preliminary recommendations regarding planned water supply service areas. Those service areas were developed specifically taking into account consistency with the adopted regional water quality management plan.<sup>2</sup> In delineating the Waukesha Water Utility water supply service area included herein, the Commission drew upon the preliminary regional water supply plan and the adopted regional water quality management plan as last amended for the City of Waukesha in December 2007.

#### **AREA DESCRIPTION**

The 20-year water supply service area attendant to the Waukesha Water Utility is shown on Map 1. Also shown on Map 1 are the environmentally significant lands in the vicinity of the planned water utility service area. Those lands consist of environmental corridors, isolated natural resource areas, and small wetlands and surface waters. The adopted regional water quality management plan places great emphasis on protection of the environmentally

---

<sup>1</sup>*SEWRPC Planning Report No. 52, A Regional Water Supply Plan for Southeastern Wisconsin, under preparation.*

<sup>2</sup>*SEWRPC Planning Report No. 30, A Regional Water Quality Management Plan for Southeastern Wisconsin: 2000; Volume One, Inventory Findings, September 1978; Volume Two, Alternative Plans, February 1979; Volume Three, Recommended Plan, June 1979, as last amended for the City of Waukesha in December 2007.*

sensitive lands. Details on the delineation process and protection recommendations for these environmentally sensitive areas can be found in the City of Waukesha sewer service area plan.<sup>3</sup>

The existing Waukesha water supply service area includes—by definition—the entirety of City of Waukesha corporate limits plus small adjacent areas currently served by the Waukesha Water Utility. This area is shown in blue on Map 1. That area encompasses about 21.7 square miles, the majority of which (84 percent) is currently developed and served by public sewer and water supply systems. The year 2000 population residing in this area was about 65,700 persons. Under planned 2028 conditions, the resident population in the same area is expected to be about 74,500 persons, an increase of about 13 percent over the year 2000 population level.

Also shown on Map 1 in tan color, are areas in the vicinity of the City of Waukesha which could potentially be provided with municipal water supply service by the Waukesha Water Utility. That area encompasses about 17.4 square miles, of which about 9.9 square miles, or 57 percent, is currently developed. The remaining potential service area, comprising about 7.5 square miles, or 43 percent, is considered as potentially developable land. This area has been included in the planned water supply service area primarily to support the resolution of potential water supply problems associated with existing development, rather than to support new development. Under the regional land use plan, a very limited portion of this area is proposed to be developed to support the planned population level, as can be seen by the planned increase in resident population in the area. The year 2000 population residing in this area was about 9,800 persons. Under planned 2028 conditions, the resident population in the same area is expected to be about 11,300 persons, an increase of about 15 percent over the year 2000 population level. The developed areas in the potential service area are currently served by onsite sewage disposal systems and private wells. Conversion of those areas to municipal utility services would be expected only as local conditions and initiatives warrant such conversion. Absent a demonstrated need and local initiative, residents and businesses in these areas could be expected to remain on individual wells.

## **RELATIONSHIP TO REGIONAL WATER QUALITY MANAGEMENT PLAN/WAUKESHA SEWER SERVICE AREA PLAN**

The planned Waukesha water supply service area is considered to be fully consistent with the adopted Waukesha sewer service area, as documented in the Waukesha sewer service area plan.<sup>4</sup> Three differences between the planned water supply service area and the planned sewer service do exist. The three differences are as follows:

- Four areas which are remote from the main sewer service area have not been included in the water supply service area. These areas include three holding tank sewage disposal areas and a portion of the Village of Wales. The holding tank sewage disposal areas are businesses where holding tank wastes are conveyed to the City of Waukesha sewage treatment plant by truck. There is no reason to expect these four remote areas would ever be served by municipal water supply from the Waukesha Water Utility.
- There is an approximately 1.4-square-mile area located south of IH 94 along the Bluemound Road corridor between the Fox River and STH 164 which is included in the Waukesha sewer service area, but not the Waukesha water supply service area. While currently served by the City of Pewaukee municipal water supply system, the area is connected to the City of Waukesha sewerage system.

---

<sup>3</sup>*SEWRPC Community Assistance Planning Report No. 100, 2nd Edition, Sanitary Sewer Service Area for the City of Waukesha and Environs, Waukesha County, Wisconsin, March 1999, as last amended in December 2007.*

<sup>4</sup>*Ibid.*

- An approximately 4.4-square-mile area in the Town of Genesee located along the STH 59 and CTH X corridor, immediately west of the Town of Waukesha which is included in the water supply service area, but not the Waukesha sewer service area. That area, which includes existing residential development and one large industry, is identified as a special well casing area by the Wisconsin Department of Natural Resources, due to groundwater bacterial contamination. During the regional water supply planning program, it was determined that this area should be added to the long-term municipal water supply service area in accordance with Wisconsin Department of Natural Resources staff recommendations.

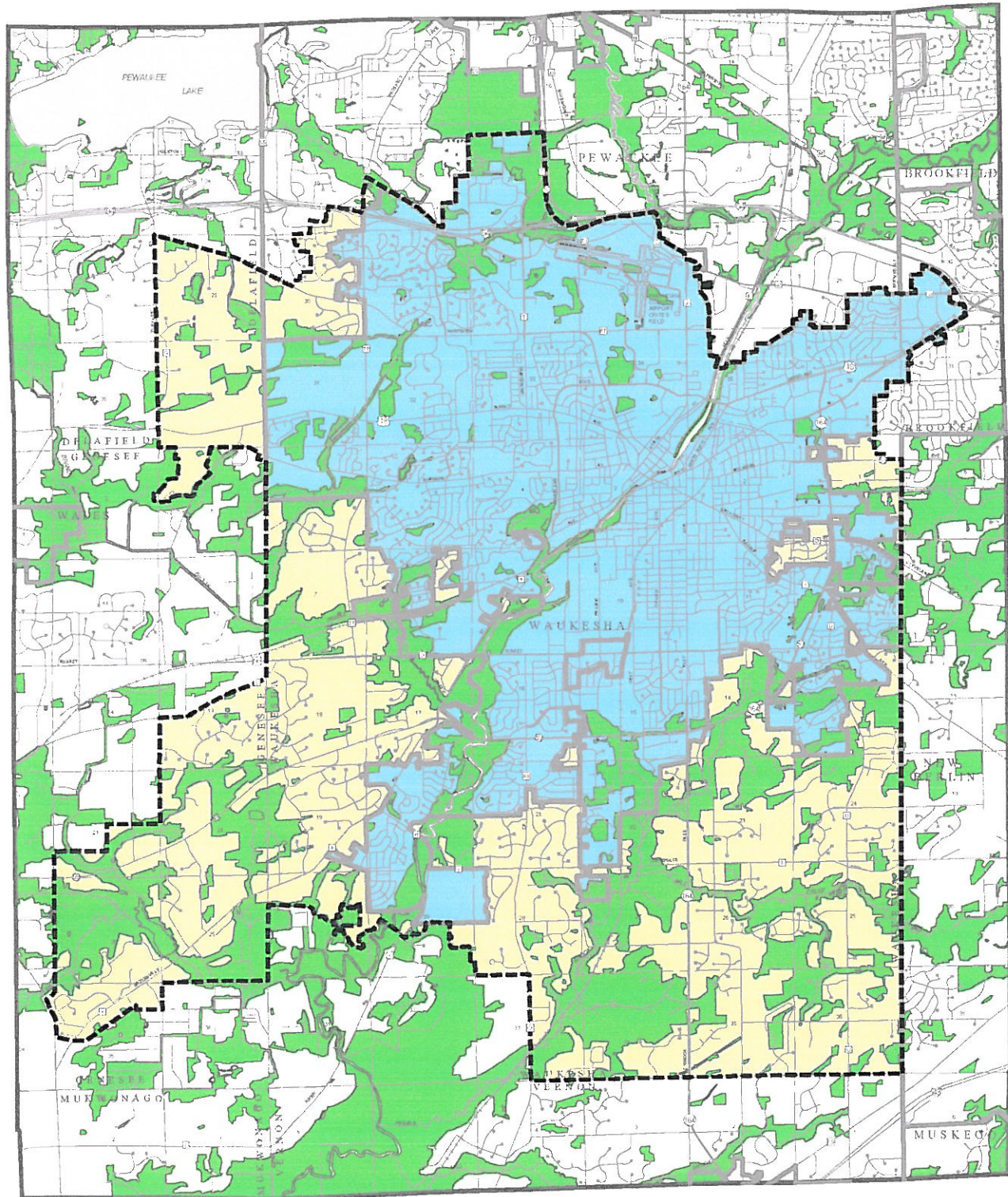
Given due consideration to the foregoing, it is concluded that the Waukesha planned water supply service area is consistent with the City of Waukesha sanitary sewer service area plan as incorporated in the adopted regional water quality management plan.

\* \* \*


#141582 V1 - WAUK WATER SUPPLY STAFF MEMORANDUM  
300-5000  
PCE/RPB/pk  
12/23/08




# City of Waukesha Water Utility Planned Water Supply Service Area: 2028



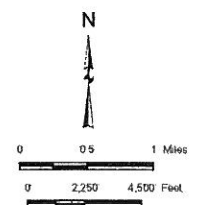
 CITY OF WAUKESHA PLUS ADJACENT AREAS CURRENTLY SERVED BY THE WAUKESHA WATER UTILITY

 POTENTIAL WATER SUPPLY SERVICE AREAS WHICH COULD BE SERVED BY THE CITY OF WAUKESHA WATER UTILITY

 ENVIRONMENTALLY SENSITIVE AREA CONSISTING OF ENVIRONMENTAL CORRIDORS, ISOLATED NATURAL RESOURCE AREAS AND WETLANDS AND SMALL SURFACE WATERS

 POTENTIAL PLANNED WATER SUPPLY SERVICE AREA BOUNDARY

 2008 CITY AND VILLAGE BOUNDARIES



Source: SEWRPC  
October 2006



Exhibit A

# Waukesha Water Utility

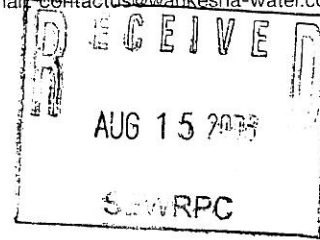
SERVING WAUKESHA SINCE 1886

115 DELAFIELD STREET  
WAUKESHA, WI 53188-3615

Telephone: (262) 521-5272 • Fax: (262) 521-5265 • E-mail: [contactus@waukesha-water.com](mailto:contactus@waukesha-water.com)

August 13, 2008

Mr. Philip Evenson  
Southeastern Wisconsin Regional Planning Commission  
P.O. Box 1607  
Waukesha, WI 53187-1607



Re: Water Service Area

Dear Mr. Evenson:


As you are aware, the City of Waukesha is considering an application for Great Lakes water to resolve its radium issues, bring our water system into final compliance with the radionuclide standard, and address the city's water needs for the foreseeable future. One requirement under the new water supply planning statute is to have the water supply service area delineated by an area-wide water quality planning agency.

The City of Waukesha Water Utility is requesting the Southeastern Wisconsin Regional Planning Commission (SEWRPC), as an authorized regional planning agency, to delineate a water service area.

We need this determination no later than December 31, 2008.

If you have any questions or need any further information, please contact me at (262) 521-5272 ext. 518.

Sincerely,

  
Daniel S. Duchniak, P.E.  
General Manager